



RADFORD SEMELE
CoFE PRIMARY SCHOOL
A family of learners expecting the best

May we have
life to the full
John 10:10

Year 6 Art Knowledge Organisers



- William Morris was a British artist born in London in 1834 and died in 1896
- He is famous for his patterns and designs inspired by flowers and plants.
- His designs were printed and repeated many times and used to make wallpapers and fabrics that decorated Victorian homes.

Vocabulary

Print - A print is an impression made by any method involving transfer from one surface to another

Composition - is the way in which different elements of an artwork are combined or arranged

Scale - the overall physical size of an artwork or objects in the artwork

Proportion - describes how the sizes of different parts of a piece of art or design relate to each other

Interior design - The way in which people decorate and improve their living space. Interior design became important in Victorian times

Malleable media - materials that can be shaped or formed by hand or with tools.

Floral - designs inspired by flowers or plants.

Intricate patterns—Very complicated or detailed patterns.

Gallery



Art Knowledge—Year 6—Spring - WW2

Key knowledge

John Piper (1903 - 1992) was an English painter, print maker and designer of stained glass windows. He was also an official war artist in WW2. He has a distinctive architectural style and uses perspective in his images to give a sense of depth.

John Hutton (1906 - 1978) Glass engraving artist from New Zealand. He is most famous for his glass engravings on the West Screen of Coventry Cathedral.

Vocabulary

War artist—an artist employed to draw or paint events and situations during a war.

Stained glass—the colouring of glass to make them decorative. Can be pattern or figures often seen in churches.

Perspective—art of using line to represent 3D objects on 2D surface.



Engraving—decoration of glass by finely carving or scratch-into the surface.

ing

Proportion—The proportion is all about the size of what you draw compared to the other objects.

Line—A line is a mark made on a surface that joins different points. Lines can vary in length, width, direction and shape.

Tone—How dark or light a colour is.

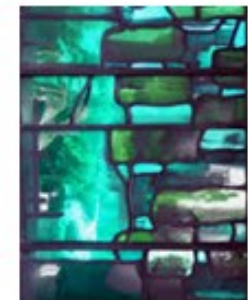
Shading—The use of marking made to suggest three-dimensionality, shadow, or degrees of light and dark in a picture or drawing.

Blending techniques— the way of mixing different colours in layers to create new tones and shades

Gallery



John Piper



Art Knowledge - Year 6 - Summer - Our Changing World

Street art is a form of art displayed in public spaces, often on buildings, streets, and other surfaces. It's characterized by its accessibility and democratic nature, aiming to be seen by a broad audience outside of traditional gallery settings. While related to graffiti, street art often involves a wider range of materials and techniques, including spray paint, stencils, stickers, and even projecting videos

Graffiti art, often found on public walls and buildings, refers to images, text, or illustrations painted, usually without permission, within public view. It's a form of visual communication and artistic expression, but also a controversial subject due to its association with vandalism

Banksy

Banksy is a British street and graffiti artist. He likes to remain anonymous and not let people know his true identity. He often draws in high visibility public places such as on buildings or train stations. His paintings are often about politics, war and other important topics. The graffiti is done with a stencilling technique. Such works have been done on streets, walls, and bridges of cities throughout the world.

Frank Shepard Fairey

Fairey's art, known for its bold, iconic style and political commentary, often blends elements of graffiti, pop art, and propaganda with a focus on social and political issues. His work is characterized by strong geometric lines and geometric shapes

Tone - how light or dark something is

Tagging - the writing of a nickname or mark on a surface by a graffiti artist

Vandalism - action involving deliberate destruction of or damage to public or private property

Graffiti - writing or drawings scribbled, scratched, or sprayed illicitly on a wall or other surface in a public place.

Expressive - effectively conveying thought or feeling

Political - motivated by a person's beliefs or actions concerning politics

Contrasting - compare in such a way as to emphasize differences

Satirical - the use of humour, irony, exaggeration, or ridicule to expose and criticize people's stupidity or ideas.

Stencils - A thin sheet of card, plastic or metal with a shape or letters cut out of it, used to produce the cut design on the surface by the application of paint or ink through the holes.

Gallery



Banksy



Frank Shepard Fairey



Graffiti