



**RADFORD SEMELE**  
CoFE PRIMARY SCHOOL  
A family of learners expecting the best

May we have  
*life to the full*  
John 10:10

# Year 6 Art Knowledge Organisers



- William Morris was a British artist born in London in 1834 and died in 1896
- He is famous for his patterns and designs inspired by flowers and plants.
- His designs were printed and repeated many times and used to make wallpapers and fabrics that decorated Victorian homes.

### Vocabulary

Print - A print is an impression made by any method involving transfer from one surface to another

Composition - is the way in which different elements of an artwork are combined or arranged

Scale - the overall physical size of an artwork or objects in the artwork

Proportion - describes how the sizes of different parts of a piece of art or design relate to each other

Interior design - The way in which people decorate and improve their living space. Interior design became important in Victorian times

Malleable media - materials that can be shaped or formed by hand or with tools.

Floral - designs inspired by flowers or plants.

Intricate patterns—Very complicated or detailed patterns.

### Gallery



## Art Knowledge—Year 6—Spring - WW2

### Key knowledge

John Piper (1903 - 1992) was an English painter, print maker and designer of stained glass windows. He was also an official war artist in WW2. He has a distinctive architectural style and uses perspective in his images to give a sense of depth.

John Hutton (1906 - 1978) Glass engraving artist from New Zealand. He is most famous for his glass engravings on the West Screen of Coventry Cathedral.

### Vocabulary

**War artist**—an artist employed to draw or paint events and situations during a war.

**Stained glass**—the colouring of glass to make them decorative. Can be pattern or figures often seen in churches.

**Perspective**—art of using line to represent 3D objects on 2D surface.



**Engraving**—decoration of glass by finely carving or scratch-into the surface.

ing

**Proportion**—The proportion is all about the size of what you draw compared to the other objects.

**Line**—A line is a mark made on a surface that joins different points. Lines can vary in length, width, direction and shape.

**Tone**—How dark or light a colour is.

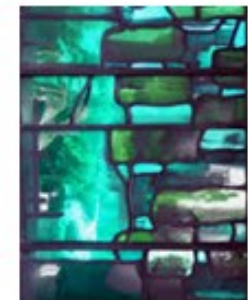
**Shading**—The use of marking made to suggest three-dimensionality, shadow, or degrees of light and dark in a picture or drawing.

**Blending techniques**— the way of mixing different colours in layers to create new tones and shades

### Gallery



John Piper



Art Knowledge - Year 6 - Summer -

K

Gallery