



RADFORD SEMELE
CoFE PRIMARY SCHOOL
A family of learners expecting the best

May we have
life to the full
John 10:10

Year 5 Art Knowledge Organisers

Art Knowledge—Year 5—Autumn—Rainforests and Mayans

Frida Kahlo, was a Mexican painter. Lots of her paintings are of herself (self-portraits). She was also influenced by native Mexican culture. Her paintings were usually made of bright colours. Kahlo's work is sometimes called "surrealist."

Diego Rivera (also Mexican) is known for creating large murals, or wall paintings. In his murals he represented scenes from Mexico's history, telling of its cultures, farming and industry, wars, and politics. His paintings feature bright colours and are crowded with people and symbols.

Key knowledge and vocabulary

Portrait - A painting, drawing, photograph, or engraving of a person, especially one showing only the face or head and shoulders. A self-portrait is one that the artist creates of themselves.

Symmetry—Symmetry means that the work of art is the same on one side as the other, a mirror image of itself, on both sides of a centre line.

Proportion—The proportion is all about the size of what you draw compared to the other objects.

Line—A line is a mark made on a surface that joins different points. Lines can vary in length, width, direction and shape.

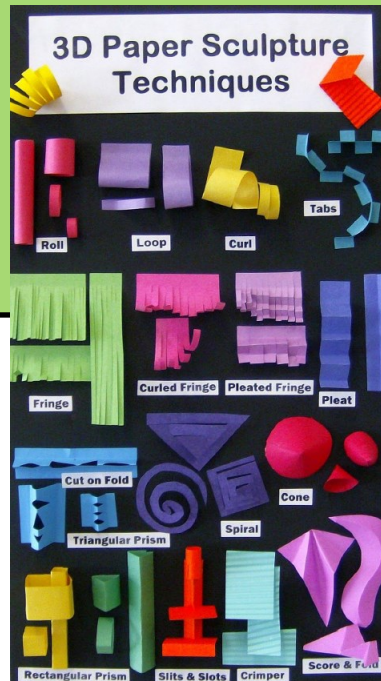
Tone—How dark or light a colour is.

Shading—The use of marking made to suggest three-dimensionality, shadow, or degrees of light and dark in a picture or drawing.

Sculpture - To form an image or representation of from solid



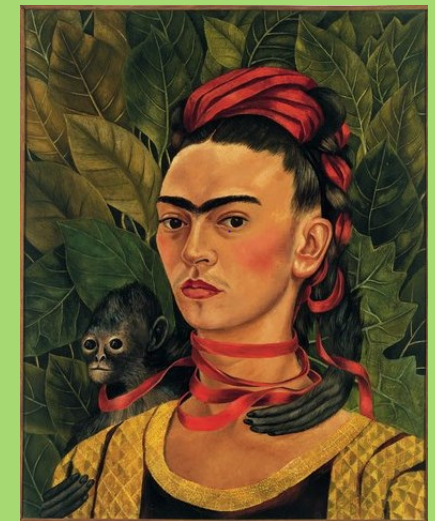
Maya art and Wayob symbols



Gallery



Diego Rivera - Creation of the Earth



Frida Kahlo- Mexican painter - 1907–1954

Key knowledge

The space race— during the 1950s and 1960s, the United States of America and the Soviet Union were competing for supremacy in many areas, including competing to explore space.



Teis Albers—Teis Albers is a contemporary mixed-media artist from the Netherlands. His art is a mixture of elements taken from nature, pop- and street-art.

Retrofuturism—a vision of what the future might look like created in the pre 1960's

Vocabulary

Collagraphy—a printmaking process that uses texture to create interesting surfaces within a print.

Decision—after taking different things into account you come to a conclusion.

Futuristic—an object or image that looks like its from the future.

Imagery—a collection of visual images

Propaganda—information, that may be misleading, to promote a political cause

Pupose—the reason for something being created

Technique—applying a method of making something



Gallery

Retrofuturism



Art produced between 1950-1960 that depicted what people imagined the future would look like.

Credit: Look and Learn / Bridgeman Images



Moonwalk—Teis Albers

Art Knowledge - Year 5 - Summer - Greece

Key knowledge

Grayson Perry (1960-) an English contemporary artist, writer and broadcaster. He is known for his ceramic vases and tapestries that represent elements of modern life.

Phidias - (480-430 BC) Greek sculptor, painter, and architect. His Statue of Zeus at Olympia was one of the Seven Wonders of the Ancient World. Phidias also designed the statues of the goddess Athena on the Athenian Acropolis.

Ancient Greek art - recognisable for its perfect images of the human form in pottery, sculpture and paintings. Greek architecture is also very recognisable by its columns. Greek sculpture was often brightly painted and pottery was considered a high art form, not just decoration of everyday objects.

Pinch coil into slab on the inside



Merging coils using both hands



Vocabulary

Ceramic - type of clay hardened by heat

Tapestry - a picture woven or stitched into cloth

Contemporary - modern, of the time

Pottery - objects or artworks made of clay

Sculpture - representation in 3D

Coil pot - clay technique using long cylinders of damp clay built into chosen shapes. Clay is smoothed to create sides and base of a pot.

Tone—How dark or light a colour is.

Shading—The use of marking made to suggest three-dimensionality, shadow, or degrees of light and dark in a picture or drawing.

Gallery

