



RADFORD SEMELE
CoFE PRIMARY SCHOOL
A family of learners expecting the best

May we have
life to the full
John 10:10

Year 1 Art

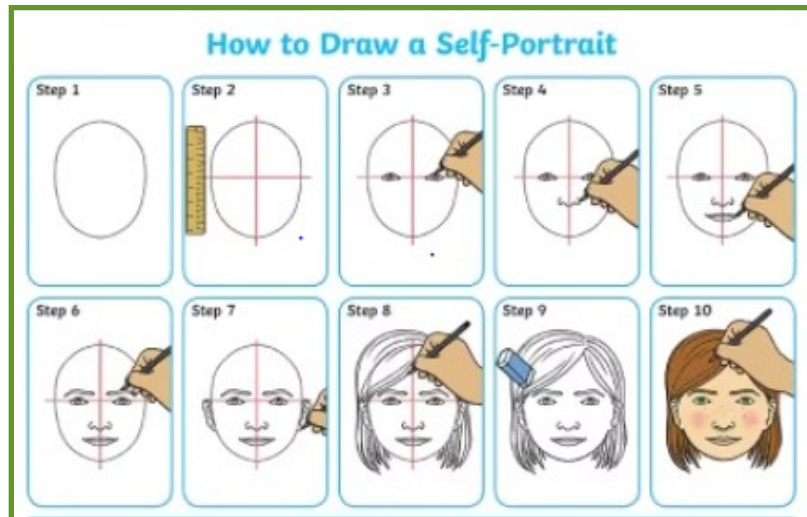
Knowledge Organisers

Art Knowledge—Year 1—Autumn—Myself, My Family and My Home

Key knowledge

Andy Warhol (1928-1987) was an American artist and film director. He became famous because of his Pop Art. He used everyday objects images in his artwork. One of his most famous paintings is his colourful portrait of American movie star Marilyn Monroe.

Craig & Karl are a duo who work in collaboration to produce design, illustration and installations. Colour, pattern and shape are important themes in their work. Like Warhol, they are known for their portraits and have produced portraits of famous people.



Vocabulary

Portrait—a painting, drawing, photograph, or engraving of a person, especially one showing only the face or head and shoulders. A self-portrait is one that the artist creates of themselves.

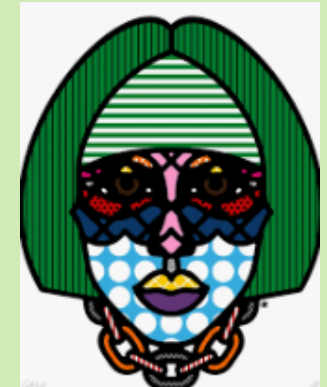
Pop Art—Pop art is a movement that started in the 1950s. Artists use ordinary objects—comic strips, soup cans, newspapers, and more, in their work. The Pop art used the idea that art can come from anywhere and even ordinary objects can be made into art.

Complimentary colours—Complementary colours are pairs of colours that contrast with each other more than any other colour, and when placed side-by-side make each other look brighter. For example blue and orange, purple and yellow and green and red.

Gallery



Andy Warhol— American artist and film director -1928-1987



Craig and Karl portraits

Colour Wheel



This colour wheel shows which colours are harmonious when placed together. Colours that are opposite each other on the colour wheel are complementary, and can be used to create contrast.

Art Knowledge - Year 1—Spring—The United Kingdom

Key knowledge

Paul Klee (1879)-1940) was a Swiss-German artist who is well known for his use of simple shapes to represent buildings and his use of bright colours.

Wassily Kandinsky (1866-1944) was a Russian artist and together with Klee pioneered the abstract art movement. He was famous for his bold use of line and colour and many of his paintings were inspired by music.

Vocabulary

Sketch—a quick drawing that records your ideas or a more finished drawing that represents something.

Natural—from nature e.g. a tree

Manmade—something that has been made and doesn't occur by itself e.g. a building

Line—A line is a mark made on a surface that joins different points. Lines can vary in length, width, direction and shape.

Shape—what lines combine to make

Form—The shapes that make up an artwork.

Landmark—an object or feature easily recognised e.g. London Bridge.

Perspective—the way of representing something 3-D in two dimensions

Aerial photography—pictures taken from above, looking down on an object or landscape

Abstract art—art that doesn't represent real objects but uses shapes and colours to achieve an effect.

Gallery



Paul Klee



Wassily Kandinsky

Art Knowledge—Y1 - Summer—Buckets and Spades

Key knowledge

L.S. Lowry (1887–1976) English artist famous for his drawings and paintings of Lancashire life. He lived and worked in Salford, Manchester and painted busy urban landscapes. His paintings are easily recognised by the 'matchstick' figures, or figures painted with little detail. He painted mainly working people and the industrial cities of the North of England. His seaside paintings show how ordinary people would have spent a rare day out at the seaside.

Vocabulary

Landscape - is the depiction of natural scenery such as mountains, valleys, trees, rivers, and forests, especially where the main subject is a wide view.

Foreground - the area of the picture space nearest to the viewer

Middle ground - is the space naturally occurring between the foreground and the background

Background - the part of a painting representing what lies behind objects in the foreground and middle ground.

Colour wheel— a circle with different coloured sectors used to show the relationship between colours

Complimentary colours—Complementary colours are pairs of colours that contrast with each other more than any other colour, and when placed side-by-side make each other look brighter. For example blue and orange, purple and yellow and green and red.

Analogous colours - colours that sit beside each other on the colour wheel and are similar e.g. red, orange and yellow.

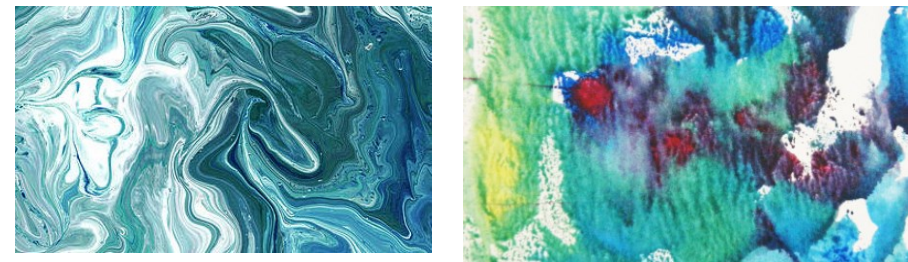
Marbling - printing multi-coloured swirled patterns on paper or fabric. The patterns are formed by first floating the colours on the surface of a liquid, and then laying the paper or fabric onto the colours to absorb them.

Monoprint - is a form of printmaking where the image can only be made once, unlike most printmaking which allows for multiple copies.

Gallery



Lowry - July at the Seaside



Marbling and monoprint examples